

USB Disk Pro

User Manual

Ver 1.01_b

Table of Contents

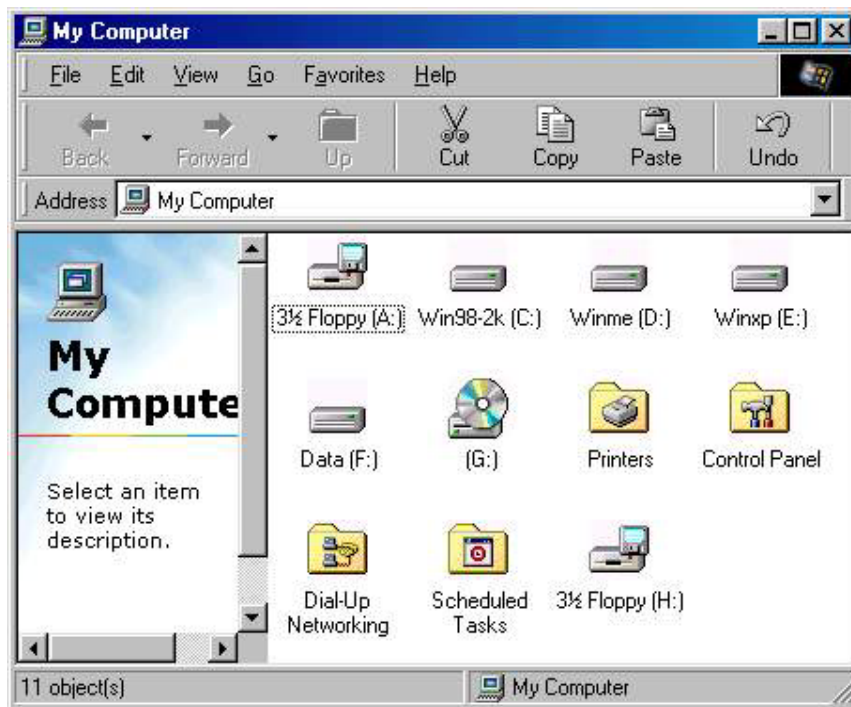
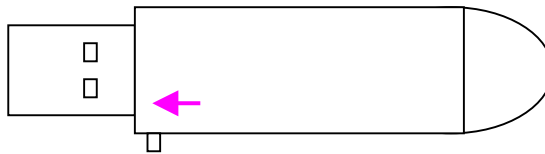
1	About USB Disk Pro	3
2	New Features	4
3	Important Notice	5
4	How to make device bootable	
	Method 1 – Windows 98 / 98 SE – Windows Mode	6
	Method 2 – Windows 98 / 98 SE – DOS Mode	7
	Method 3 – Windows XP	8
5	Main Screen	9
6	Setup password	10
7	Change password	12
8	Disable / Remove password	13
9	Unlock device	14
10	Password hint	15

About USB Disk Pro

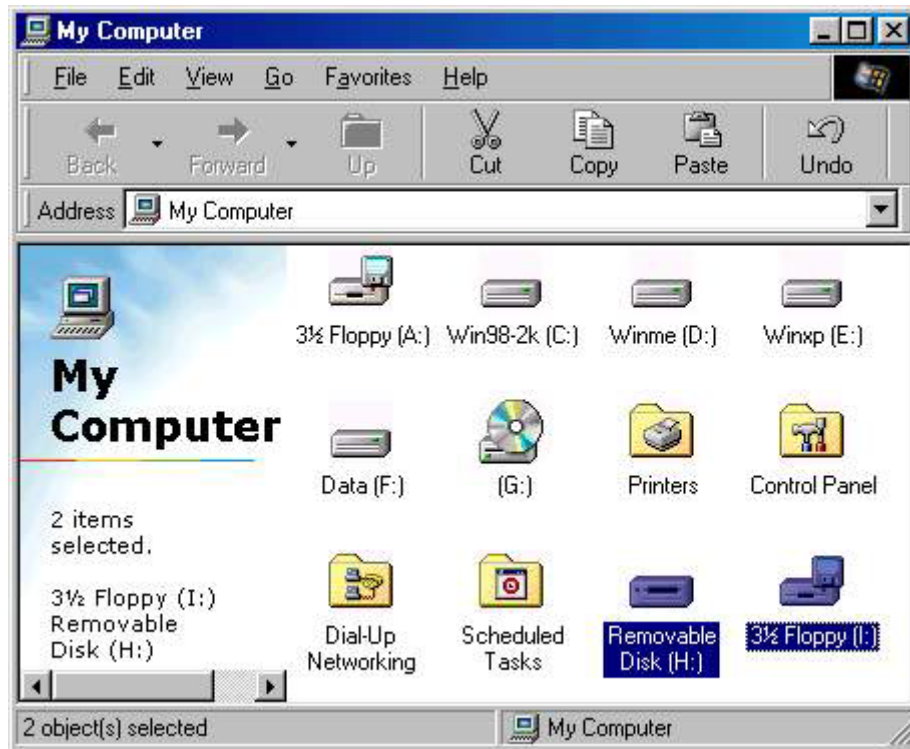
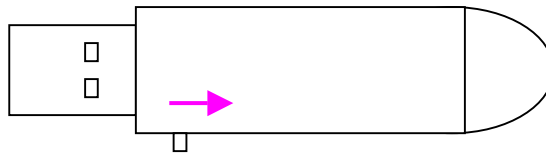
Secure your personal data with USB Disk Pro. USB Disk Pro has some new features. Unlike USB Disk, the USB Disk Pro has been partitioned into two partitions, for which one of the partition is 1.44MB, same as a floppy drive; and depends on the flash memory, the rest of the capacity is allocated for normal use. (Show Below)

Two Positions

- (1) **FDD (Floppy Disk) state.** Push the switch towards the USB connector.



- (2) **HDD (Hard Drive) state.** Push the switch back, away from the USB connector.



New Features

1. Allows user to set own password. (*maximum 16 characters*)
2. Allows user to enter “Password Hint”, in case user forgot about their password
3. Bootable feature – format with system files (in Windows 98/ME) and also motherboard must support **USB-FDD** as a boot up device, you can boot up the system with USB Disk Pro in **FDD** state.
4. Bootable feature – format with system files and also motherboard must support **USB-ZIP** as a boot up device, you can boot up the system with USB Disk Pro in **HDD** state. (motherboard dependent)
5. Automatically format the HDD part of the USB Disk Pro when enter wrong password 6 times.

IMPORTANT

1. When using USB Disk Pro with the security application program, only **ONE** USB Disk Pro is allowed at once. **DO NOT PLUG IN TWO OR MORE USB DISK PRO AT THE SAME TIME.**

Windows 2000 Users Only

2. Since Windows 2000 only can support **ONE** removable disk drive, therefore please follow the following procedures when using USB Disk Pro in Windows 2000 environment.
 - (i) Switch to HDD mode first
 - (ii) Plug in the USB Disk Pro into USB port, wait till Windows recognized the device
 - (iii) Remove USB Disk Pro from USB port
 - (iv) Switch to FDD mode
 - (v) Re-insert to USB port
 - (vi) Copy the security application program (pass.exe) to desktop
 - (vii) Remove USB Disk Pro from USB port
 - (viii) Switch back to HDD mode
 - (ix) Reinsert USB Disk Pro to USB port
 - (x) Access the security program from desktop and use USB Disk Pro normally**You only have to do step (i) ~ (viii) once.**

Mac OS Users Only

3. There is **NO** Security Application Program available for Mac OS's yet. Will provide the Security AP for Mac soon.
4. Mac OS 8.6 ~ 10.1.1 These operating systems can only support **ONE** removable drive. So, when you switch to "**FDD**" mode, you will only see the 1.44MB drive in Mac. If you switch to "**HDD**" mode, you will only see the hard drive part of the USB Disk Pro. (Total capacity – 1.44MB)
5. Mac OS 10.1.2 and/or later From Mac OS 10.1.2 onward, Mac OS can support multi removable drives, so you will see two drives as you will in any of the Windows operating system

How to make the device bootable

Users need to copy boot files to the “FDD” of the device, if want to boot up using USB-FDD, else, need to copy boot files to “HDD” of the device, if want to boot up using USB-ZIP.

- You can only copy boot files from Windows 98, Windows 98 SE and Windows XP.
- Save any data you want first before proceeding the following steps.

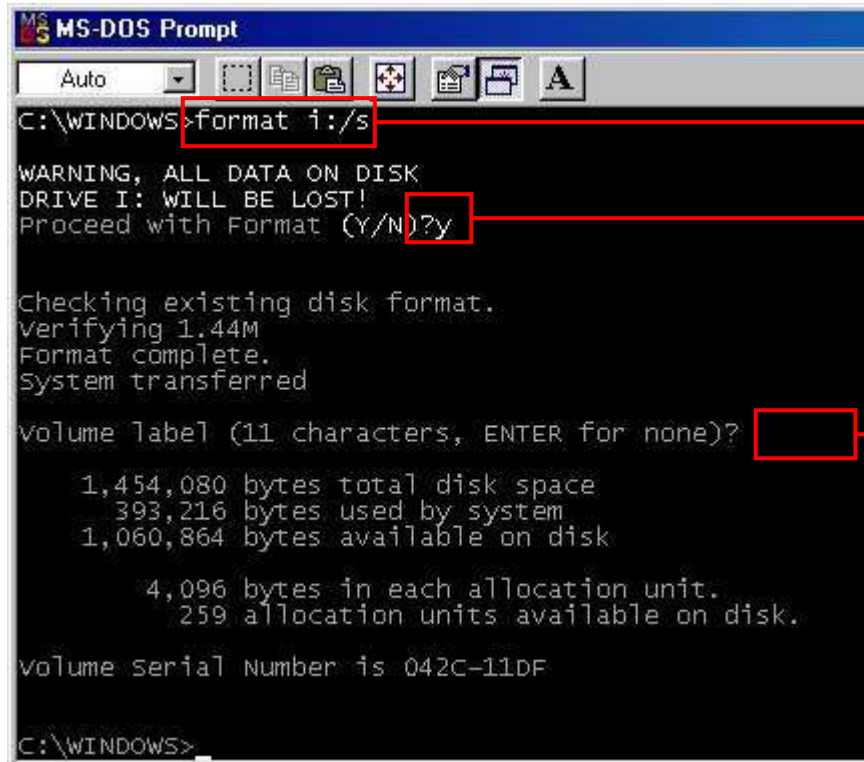
Method (1) Windows 98 / 98 SE – Windows Mode

- Open “My Computer”
- Find the drive letter that represents “FDD” (or “HDD”) of the device
- Right click the mouse bottom on the drive letter and select format
- Tick “Copy system files” to copy boot files
- Click “Start” to begin



Method (2) Windows 98 / 98 SE – DOS Mode

- (i) Goto “DOS Mode” from Windows
- (ii) Type “format x: /s”
(where x represent the drive letter of the “FDD” or “HDD”)
- (iii) Type “y” to proceed
- (iv) Enter volume label



The screenshot shows the MS-DOS Prompt window with the following text and annotations:

```
C:\WINDOWS>format i:/s
```

Annotation (ii) points to the command `format i:/s`.

```
WARNING, ALL DATA ON DISK  
DRIVE I: WILL BE LOST!  
Proceed with Format (Y/N)?y
```

Annotation (iii) points to the response `y`.

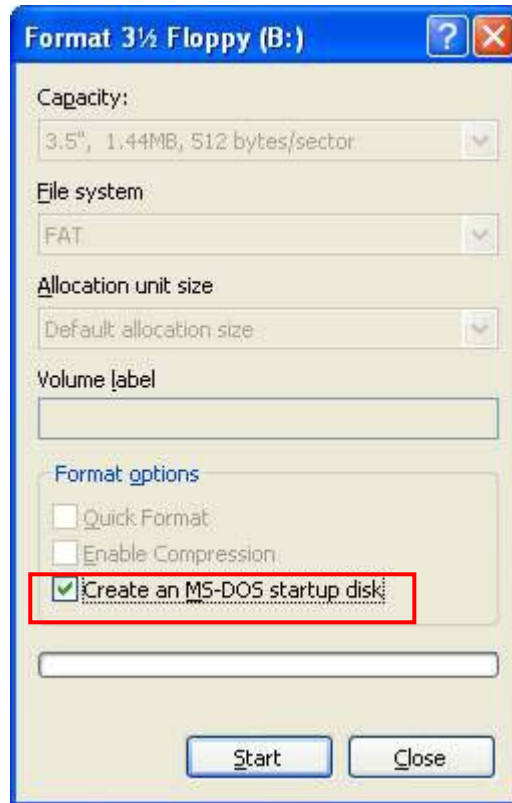
```
Checking existing disk format.  
Verifying 1.44M  
Format complete.  
System transferred  
Volume label (11 characters, ENTER for none)?
```

Annotation (iv) points to the empty input box for the volume label.

```
1,454,080 bytes total disk space  
393,216 bytes used by system  
1,060,864 bytes available on disk  
  
4,096 bytes in each allocation unit.  
259 allocation units available on disk.  
  
Volume serial number is 042C-11DF  
C:\WINDOWS>
```

Method (3) Windows XP

- (i) Open “My Computer”
- (ii) Find the drive letter that represents “FDD” of the device
- (iii) Right click the mouse bottom on the drive letter and select format
- (iv) Tick “Create an MS-DOS start up disk” to copy boot files
- (v) Press “Start”



PS : Windows XP can only copy boot up files to “FDD” only. It cannot copy to “HDD” of the device.

Main Screen



A Set up / Change password

B Disable / Remove password

C Unlock Device

D Password Exist Status – tells you whether a password has been set up or not

E Device Lock Status – tells you whether the device is locked or not

F Forgot Password ? – don't worry, let password hint remind you

Apparatus A – Setup Password

- (1) Press “Set Password” to setup password, you will see the following screen



The dialog box titled "Security Application Program V1.01" contains the following fields and controls:

- Old Password: [Empty text box]
- New Password: [Empty text box]
- Confirm Password: [Empty text box]
- Hint (31 bytes): [Empty text box]
- ☐ Unmask Password
- [Set] [Cancel] buttons

- (2) Enter a password of your choice. (maximum 16 characters long)
- (3) Confirm password by re-enter the password you set in (2).
- (4) Enter a hint of your own, in case you forget your password. You can enter anything you want within 31 characters.



The image shows two states of the "Security Application Program V1.01" dialog box, connected by a green arrow pointing from left to right.

Left State:

- Old Password: [Empty text box]
- New Password: [2] [xx]
- Confirm Password: [3] [xx]
- Hint (31 bytes): [4] [What is my password?]
- ☐ Unmask Password
- [Set] [Cancel] buttons

Right State:

- Old Password: [Empty text box]
- New Password: [123]
- Confirm Password: [123]
- Hint (31 bytes): [What is my password?]
- ☒ Unmask Password
- [Set] [Cancel] buttons

PS : Tick “Unmask Password” box to see what you have entered.

- (5) Press “Set” to confirm changes. You will see the following message window pop up. This message window tells you, that the device will be automatically locked after you remove the device from USB port.



- (6) Once you have set up the password correctly, you will notice the change in “Password Exist” Status.



NOTE : When you remove the device from USB port and re-insert it again, the device will automatically be locked. If you try to access it, it will reply with some error message. (depending on the operating system, the error message will be different)



If you execute the Security AP, you will see that the device is LOCKED.



Apparatus A – Change Password

- (1) If you have already setup a password before, you can change the password you set.
Click “Change Password” to change.



- (2) Enter your old password
(3) Enter new password of your choice
(4) Confirm the new password by re-enter
(5) Change password hint if you wish.

PS : (i) Password Hint does not have to enter/change, if you don't want to use it or
You want to use the old hint.
(ii) Password Hint can only be edit with new password. ie : Password Hint can
not be edit/change without change of password.



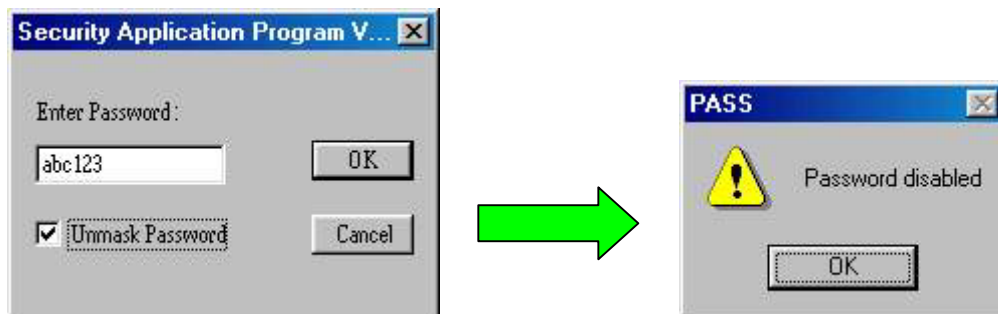
- (iii) Use “Unmask Password” to see what you have typed.

Apparatus B – Disable / Remove Password

(1) If you no longer want to use the password, select “Disable Password” to remove it.



(2) Enter your password.



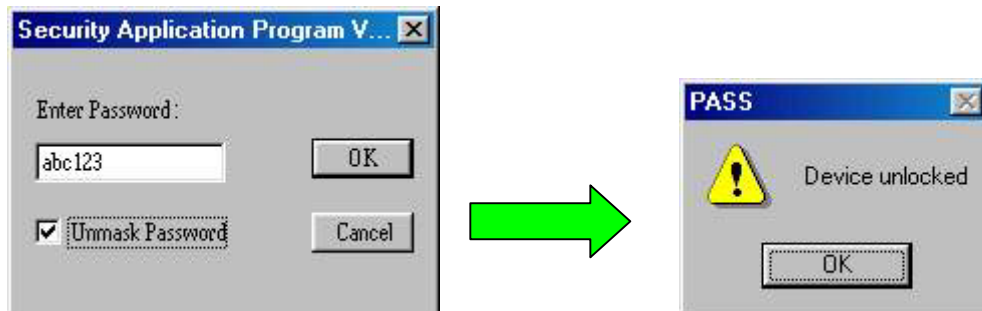
You only have SIX chances to enter password correctly. If you enter wrong password six times, it will automatically FORMAT your HDD part of your USB Disk. (All data will be lost)

Apparatus C – Unlock Device

- (1) If you have setup a password, before you can access the HDD part of the USB Disk, you must “Unlock” first. (enter password) Select “Unlock” to enter password.



- (2) Enter your password.



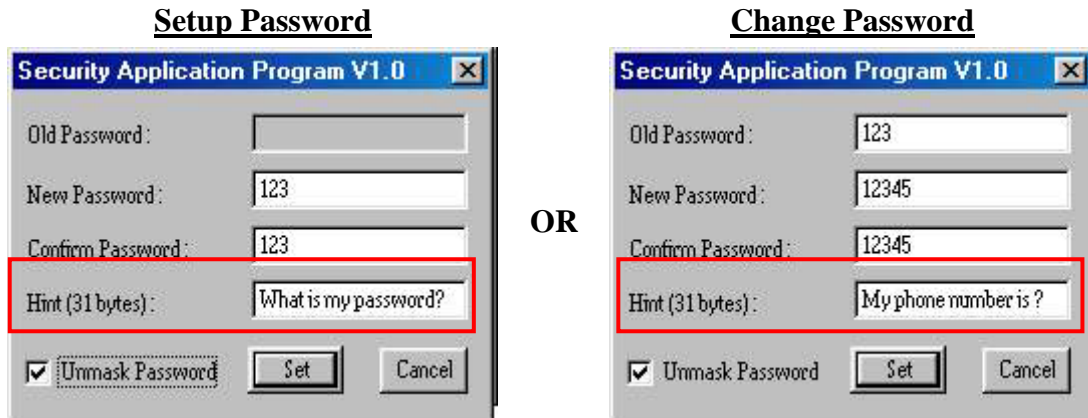
You only have SIX chances to enter password correctly. If you enter wrong password six times, it will automatically FORMAT your HDD part of your USB Disk. (All data will be lost)

Apparatus F – Password Hint

As a human being, we all forget things from time to time. So when you setup/change your password, you can also edit a “Reminder” of your choice, in case you forget your password.

- (1) Enter a hint of your choice. (maximum 31 characters long)

You can edit the hint only when you



- (2) Press “Password Hint” any time to get your reminder.

