

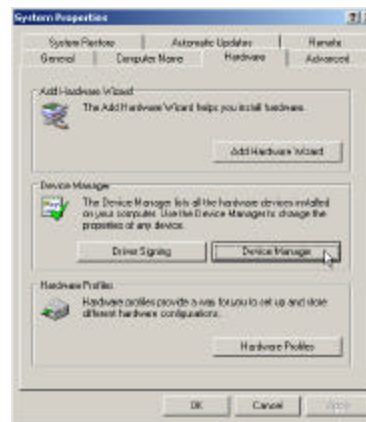
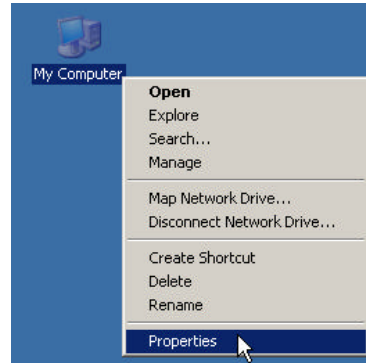
## TFM-560PCI*plus* (\*I102DF) installation procedure for Windows XP

When you finished Hardware installation, then reboot system.

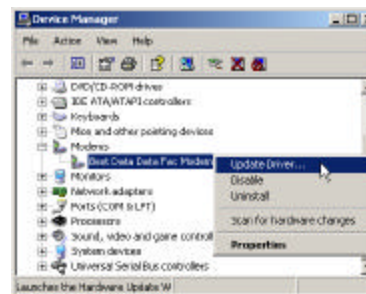
The System will automatically install the default driver “BestData data fax modem” like for TFM-560PCI*plus*. This driver did not work (the modem will not dial out with this driver). Please follow the instructions below to update the driver for the modem.

**If Windows XP install the modem as “Generic SoftK56 modem”, it should work fine and please do not update the driver.**

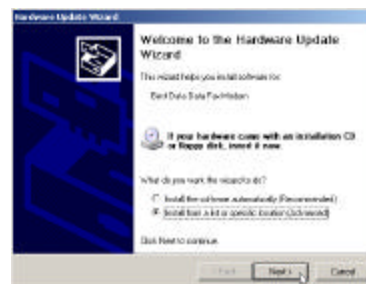
1. Right click on “My Computer” on Desktop.
2. Then select “Properties”.
3. Click on “Hardware” tab, and click on “Device Manager”.



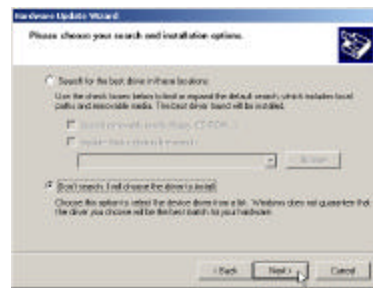
4. Double click “Modems”, right click on “Best Data Data Fax modem”, and select “Update Driver.....”.



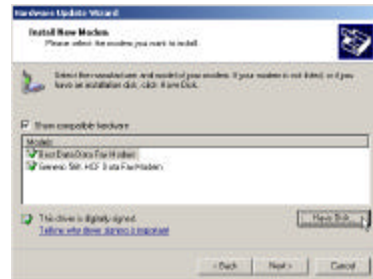
6. Select “Install from a list or specific location [Advanced]” and then click on “Next”.



7. Select “Don’t search. I will choose the driver to install” and then click on “Next”.



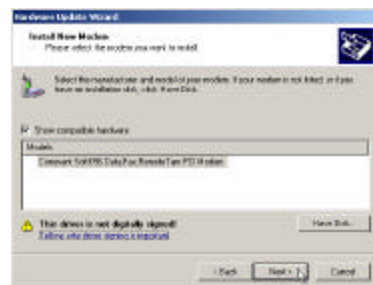
8. Insert the Driver CD-ROM into CD-ROM drive, then click on “Have Disk...”. If you downloaded the driver from our web site, please unzip the file to local drive and record the path (i.e. C:\TFM560PCIplus\winxp).



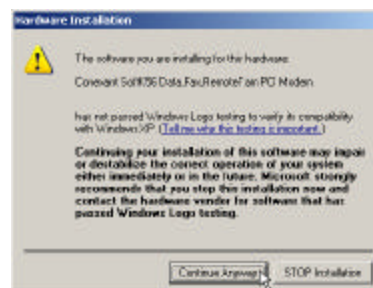
9. Specify the driver directory as “F:\Driver\WinXP” (“F” is CD-ROM drive letter and “Driver” is the directory name), then click on “OK”. Or you can click on “Browse” and then find the driver location.



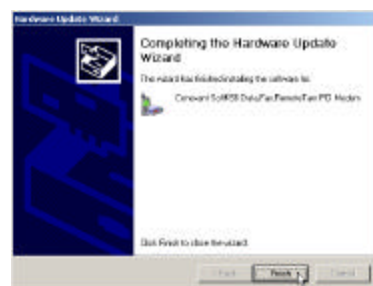
10. Choose the first item “Conexant SoftK56 Data,Fax, RemoteTam PCI modem” and click on “Next”.



11. When warning window appears, click on “Continue Anyway”.



12. Click on “Finish” when install driver was finished.



13. Before using the modem, please set modem to the correct region. To do so, click on “Start”, move cursor to “Settins”, and then click on “Control Panel”. Double click on “HSF Modem Region Select” icon.



14. Please select the correct region in “Select a region” and then click on “OK” button.

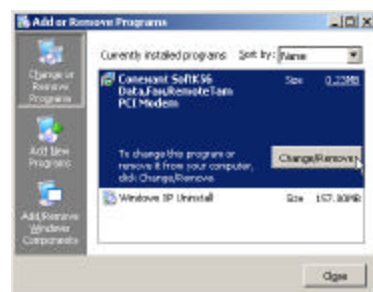
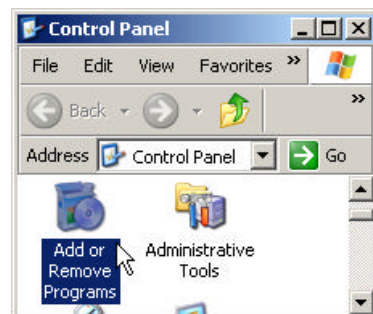


15. Please reboot your system now.

After the computer boots back up, the modem is ready for you to operate.

### [How to remove the modem from Windows?]

1. Open “Control Panel” and then double click on “Add or Remove Programs” icon.
2. Select “Conexant SoftK56 Data,Fax, Remote Tam PCI Modem” and then click on “Change/Remove” button.
3. When “Conexant SoftK56 Data,Fax, Remote Tam PCI Modem” item has disappeared, it’s finish.
4. Please shutdown your system and remove modem from your computer.



**If you have any question regarding the driver upgrade, please contact us at Tel: 310-891-1100 and ask for “Tech Support”.**