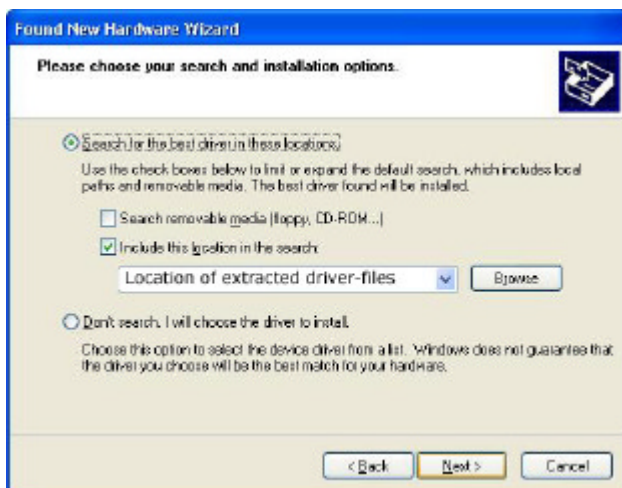


Driver-Installation ICS-45/46 (ZiO/Dolphin) on Windows XP

1. After plugging the device into a free USB-port it is detected by Windows XP automatically. The „Found New Hardware Wizard“ will pop up und let you choose “Install from a list or a specific location (Advanced)”.



2. Now please point to the location you have extracted the drivers to:



3. After hitting „Next“, the driver is being searched for :



4. Confirm this message by pressing „Continue Anyway“.



5. Now the driver is being installed:



6. The driver has been installed properly



7. Now please restart your Windows XP-System.