

ZyXEL Prestige 641

V2.40(P.03) Release Note

Date: Nov. 16, 1999

This document describes the features in the ZyXEL Prestige 641 product for its V2.40(P.03) release. The new feature section describes the newly added feature with this release.

Limitations :

- In ENET ENCAP mode, the IPX protocol is not supported.
- The DHCP Client function only works for ISP type remote node.
- The embedded IP multicast filter is supported only at pure Bridge mode. Once it's been enabled all the multicast frames will be filtered except IP multicast packets.

Version Numbers :

- Bootbase Version: V1.01
 - ZyNOS Version: V2.40(P.03)
-

Fixed Bug List

1. The problem PPPoE can not make a connection through P641 Bridge mode is fixed.

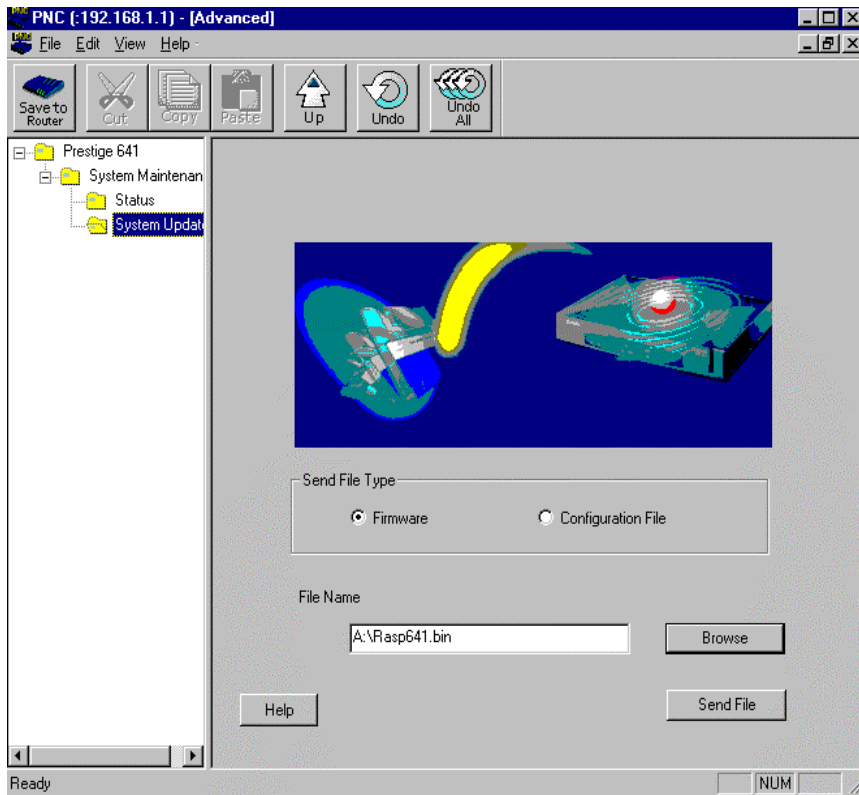
How To Upgrade Firmware

First download the file "p641.bin" (router firmware for Prestige 641) from ZyXEL anonymous FTP server (<ftp.zyxel.com>), then you can choose either PNC or SMT (depends on your environment) to do the upgrade.

Using PNC :

If you have PNC and also can access your Prestige 641 through Ethernet, you can use PNC Advanced Setup tool to upgrade your router firmware.

1. Execute PNC Advanced Setup and select System Update.
2. Check the Firmware selection, browse or key-in the path and file name of new router firmware, and then press Send File button.



Using SMT :

You need to connect Prestige 641 to your PC with an RS-232 cable and execute the terminal emulation software on your PC. Then follow the following procedure to upgrade your firmware.

1. Enter SMT menu 24.7.1 and follow the instruction to execute the firmware upload procedure.

Menu 24.7.1 - System Maintenance - Upload Router Firmware

To upload router firmware:

1. Enter "y" at the prompt below to go into debug mode.
2. Enter "**atur**" after "Enter Debug Mode" message.
3. Wait for "Starting XMODEM upload" message before activating Xmodem upload on your terminal.
4. After successful firmware upload, enter "**atgo**" to restart the router.

Warning: Proceeding with the upload will erase the current router firmware.

Do You Wish To Proceed? (Y/N)

2. After restart your Prestige, it will show the following information of running firmware.

```

Bootbase Version: V1.01 | 7/23/1999 13:44:39
RAM: Size = 8192 Kbytes
DRAM POST: Testing: 8192K OK
  
```

FLASH: Intel 8M *2

ZyNOS Version: **V2.40(P.03) | 11/16/1999 9:32:01**

Press any key to enter debug mode within 3 seconds.

.....

Or in SMT menu 24.2.1, you should be able to see a screen as below.

Menu 24.2.1 - System Maintenance - Information

Name:

Routing: IP

ZyNOS S/W Version: **V2.40(P.03) | 11/16/1999**

ADSL Chipset Vendor: Alcatel, Version 1.4.1

ANSI Version: ANSI Issue 2

LAN

Ethernet Address: 00:a0:c5:01:23:45

IP Address: 192.168.1.1

IP Mask: 255.255.255.0

DHCP: Server

Press ESC or RETURN to Exit:

Please make sure that you are using ZyNOS Version: V2.40(P.03) firmware in your Prestige 641. Otherwise, do the firmware upgrade procedure before operation.