

# OPEN UP THE POSSIBILITIES OF OPEN SOURCE.

More and more companies are taking advantage of open source platforms to address their cloud, analytics, mobile and social needs.



**80%** of z Systems™ top accounts run Linux on z Systems.<sup>1</sup>

**73%** of enterprises run mission-critical workloads on Linux.<sup>2</sup>

As the importance of Linux continues to grow, companies are increasingly turning to the IBM Enterprise Linux Server to consolidate and simplify their IT environments.

## Companies that continue using distributed environments will experience:

### MORE DOWNTIME

The average company experiences **16 outages per year** at a cost of \$5.1 million.<sup>3</sup>



### WASTED MONEY

**70%** of IT budgets are spent just on maintenance, instead of on innovation.<sup>4</sup>



### LOWER EFFICIENCY

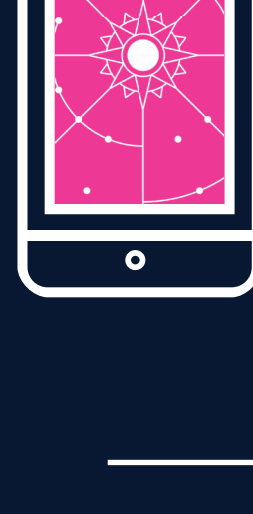
**70%–75%** of data capacity is unused.<sup>5</sup>

## LINUX ON IBM Z SYSTEMS IN ACTION.

### SICOOB CONNECTS 2.5 MILLION MEMBERS THROUGH MOBILE.

The largest credit union system in Brazil swapped their old Intel-based servers for more efficient IBM Enterprise Linux Servers to consolidate and virtualize their Linux landscape.

#### THE RESULTS?



Mobile grew by **600%**.



Online banking grew by **200%**.



Electricity costs plummeted by **\$1.5 million**.<sup>6</sup>



Space and administrative requirements **dropped**.

### NATIONWIDE INSURES INCREASED AGILITY AND LOWER COSTS.

Nationwide Insurance consolidated distributed servers to Linux virtual servers running on IBM® z Systems.

#### THE RESULTS?



Virtualizing their IT environment resulted in **\$46 million in cumulative savings**.<sup>7</sup>



Power, cooling and floor space requirements **dropped by 80%** thanks to the ability to consolidate hundreds of virtual servers onto a Linux on z Systems based private cloud.

### BANCA CARIGE PUTS THEIR INNOVATIVE MOBILE SERVICES ON A SECURE PLATFORM.

One of the largest banks in Italy was struggling to keep up with their customers' embrace of web and mobile technologies, and their expectations for 24/7. That's why they began running their newly developed EC analytics and mobile capabilities on the IBM zEnterprise EC 12 platform – to ensure maximum availability.

**NOW THEY CAN DEPLOY INNOVATIVE SERVICES QUICKLY AND COST EFFECTIVELY.**

### THE DUNDEE CITY COUNCIL GETS MORE WITH LESS.

The Dundee City Council's principal goal is to provide high-quality services to citizens reliably and cost-efficiently effectively. How did IBM help make this happen? Dundee consolidated its Oracle Database environment supporting critical services from distributed services to the IBM zEnterprise BC12 platform.

#### THE RESULTS?



They are able to efficiently handle growing workloads without adding resources.



The superior price performance made the Enterprise Linux Server an easy and cost-effective solution.<sup>8</sup>

## IBM TAKING OUR OWN ADVICE.

IBM is constantly working to help customers manage exponential data growth. But like many of our clients, we faced rampant application and server sprawl – with almost 15,000 servers. But that is history. Thanks in part to Linux on z Systems, we were able to make great strides.

**93%** reduction in software licenses.<sup>10</sup>

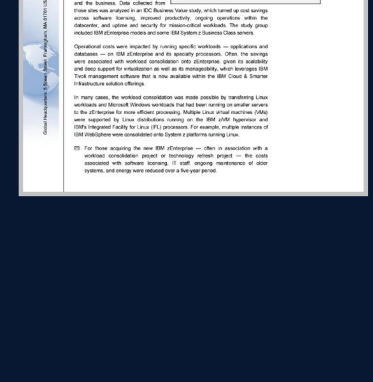
**70%** lower TCO on Linux on z Systems.



We reduced floor space requirements and saved

**30,000** megawatt-hours of energy/year.

See what an IBM Enterprise Linux Server can do for you.



Download the IDC white paper and see how consolidating Linux-based workloads onto IBM z Systems can help your company reduce IT costs, improve productivity, increase security and more.

[Download](#)

Share: [f](#) [t](#) [in](#) [v](#)



efficiency made with IBM

1. IBM, 10/2014, Top 100 is based on total installed MIPS. 2. Linux Foundation, 2015 Enterprise End User Report. 3. <http://www.smartec.com/content/en-us/about/media/pdfs/bc-state-of-data-center-survey-global-results-09-2015-en-us.pdf>. 4. [http://www.ibm.com/press/us/14/ibm\\_data\\_center\\_survey\\_0915.html](http://www.ibm.com/press/us/14/ibm_data_center_survey_0915.html). 5. <http://hardware.slashdot.org/story/10/07/29/1546255/data-storage-capacity-messily-wasted-in-data-centers>. 6. <http://www.ibm.com/software/businesscasesstudies/us/en/corp?syskey=0424851K5442903>. 7. <http://www.youtube.com/watch?v=ku9HELtwwA>. 8. <http://www.ibm.com/software/businesscasesstudies/us/en/corp?syskey=0424851K5442903>. 9. <http://www.ibm.com/software/businesscasesstudies/us/en/corp?syskey=L538389Y38106W69>. 10. <http://ssmarplanet.com/blog/2012/09/191413.html#UFdJ0A9smofacebook>